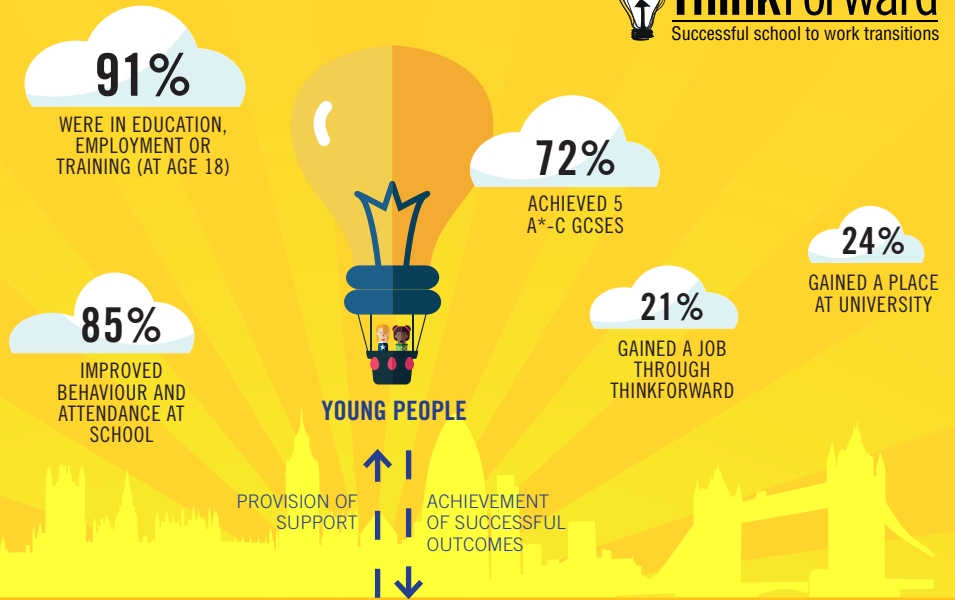


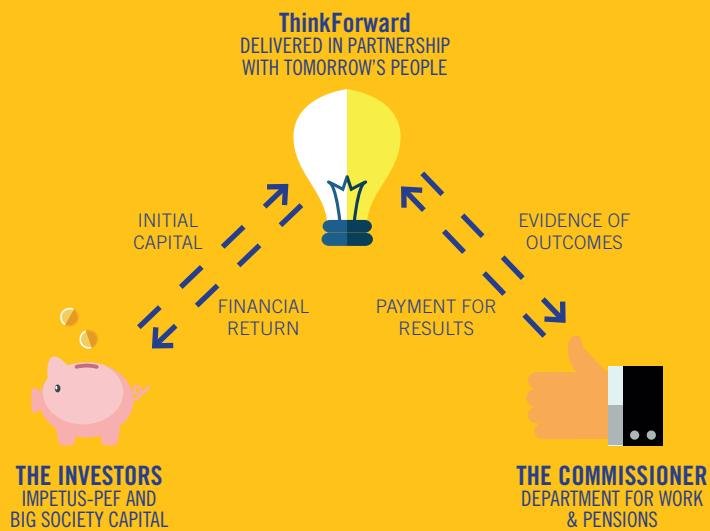
# ThinkForward SOCIAL IMPACT BOND IN ACTION

Youth unemployment is damaging for both young people and costly for society. Over the last three years the ThinkForward programme has supported 1050 disengaged young people in 14 schools in north-east London to achieve a successful transition from school to work.



## HOW THE SIB WORKS

The programme was made possible by a social impact bond; a form of social investment where charities work with commissioners and investors to resolve enduring social problems. Through a payment by results contract the delivery costs and return to investors are directly linked to young people's success.



## THE SOLUTION

At the heart of the ThinkForward programme are highly skilled 'Super Coaches'. They work with schools to identify young people most at risk of dropping out and then build trusted and supportive relationships that last for up to five years.



## THE PROBLEM

- Just under one million young people are not in education, employment or training (NEET).
- The estimated annual cost to the UK economy is £22bn.
- Disengaged young people are most likely to drop out in the transition from school to work and end up NEET.

## THE YOUNG PEOPLE THINKFORWARD SUPPORTS FACE A RANGE OF CHALLENGES

- LIVING IN AREAS OF HIGH DEPRIVATION, WITH 50% ON FREE SCHOOL MEALS
- COME FROM WORKLESS FAMILIES WITH NO POSITIVE ROLE MODELS
- 50% PREDICTED TO NOT ACHIEVE 5 A\* - C GCSES MAKING THEM 7 TIMES MORE LIKELY TO END UP UNEMPLOYED
- STRUGGLE WITH MANAGING BEHAVIOUR, TRUANTING AND/OR EXCLUDED FROM SCHOOL
- LIMITED AWARENESS OF THE WORLD OF WORK AND ROUTES TO EMPLOYMENT

